

artis3

Jelutong, Penang





## artistry

“an artistic achievement, a creation, that requires great extents of finesse, workmanship and quality. Something that is timeless and elegant, to be admired and cherished.”





freehold

# an illustrious icon emerges

Poised to grace the skylines of Jelutong, one of the most vibrant cities in Penang, Artis3 offers a stunning combination of aesthetics, lifestyle and connectivity. Another distinctive development by renowned developer Airmas Group, Artis3 comprises 3 residential highrises with contemporary designs and arguably the most comprehensive selection of lifestyle facilities in town.

Block B posh	34 level 1,100 sq.ft - 1,250 sq.ft
Block C urban	26 level 500 sq.ft - 700 sq.ft
Block D metro	17 level 1,200 sq.ft - 1,250 sq.ft





experience the  
many levels of enjoyment



LEVEL 7



LEVEL 8

Level 5

- 1 Squash Court
- 2 Badminton Court

Level 7

- 1 Multipurpose Hall
- 2 Lounge
- 3 Kid's Playzone
- 4 Courtyard
- 5 Gym Room
- 6 Game Room
- 7 Sauna
- 8 Infinity Pool
- 9 Kid's Pool
- 10 Jogging Track

Level 8

- 1 Outdoor Lounge
- 2 Feature Pathway
- 3 Outdoor Gym
- 4 Relaxing Room
- 5 Reading Corner
- 6 BBQ & Gathering Corner







## immerse in immaculate splendour

Meticulously designed and brilliantly laid out, residents of Artis3 will be pleased to find interiors that are not only discreetly planned but also exudes contemporary style. Tastefully appointed to the finest detail, every living space within your Artis3 home is thoughtfully enhanced to aptly reflect how you and your family choose to live, relax, work or entertain.



## specification

Structure	Reinforced Concrete Framework
Wall	Cement Sand Brick
Roof	Reinforced Concrete Slab
Ceiling	Skim Coat to soffit of Slab
Windows	Powder Coated Aluminium Frame with Clear Glass
Sanitary and Fittings	Quality Sanitary Ware and Fittings
Balcony (If any)	MS Railing with Paint Finishes
Doors	
Main Entrance	Timber Door with Timber Door Frame
Balcony (If any)	Powder Coated Aluminium Sliding Door with Clear Glass
Other Doors	Timber Door with Metal Door Frame
Lockset	Quality Locksets
Floor Finishes	
Living / Dining / Kitchen	Quality Floor Tiles
Bedrooms	Quality Floor Tiles
Bathrooms	Quality Floor Tiles
Utility	Quality Floor Tiles
Laundry	Quality Floor Tiles
Balcony (If any)	Quality Floor Tiles
Wall Finishes	
Bathrooms	Quality Wall Tiles
Other Areas	Plaster and Paint Finish
Additional Feature	Air Conditioner Copper Pipe ready to Living Hall and all Bedrooms

\* All items mentioned above are subject to variations or modifications as recommended by the architect and/or approving authorities.

storey plan

Block B  
posh

diagrammatic chart

Level	1	2	3	3A	5	6	7	8
33A	1,900sf (Penthouse)			1,900sf (Penthouse)		1,900sf (Penthouse)		
33								
32								
31								
30								
29								
28								
27	1,250sf	1,100sf	1,200sf	1,250sf	1,175sf	1,175sf	1,100sf	1,200sf
26								
25								
23A								
23								
22								
21								
20								
19								
18								
17								
16								
15								
13A								
13								
12								
11								
10								
9								
8								
7								
6								
5								
3A								
3								
2								
1								

Block C  
urban

Level	1	2	3	3A	5	6	7	8
26								
25								
23A								
23				700sf	700sf	700sf	700sf	700sf
22								
21								
20								
19								
18								
17								
16								
15								
13A								
13								
12								
11								
10								
9								

Block D  
meto

1	2	3	3A
1,200sf	1,250sf	1,200sf	1,250sf
1,250sf	1,200sf	1,250sf	1,200sf
1,200sf	1,250sf	1,200sf	1,250sf

Facilities

Car Park

Car Park & Facilities

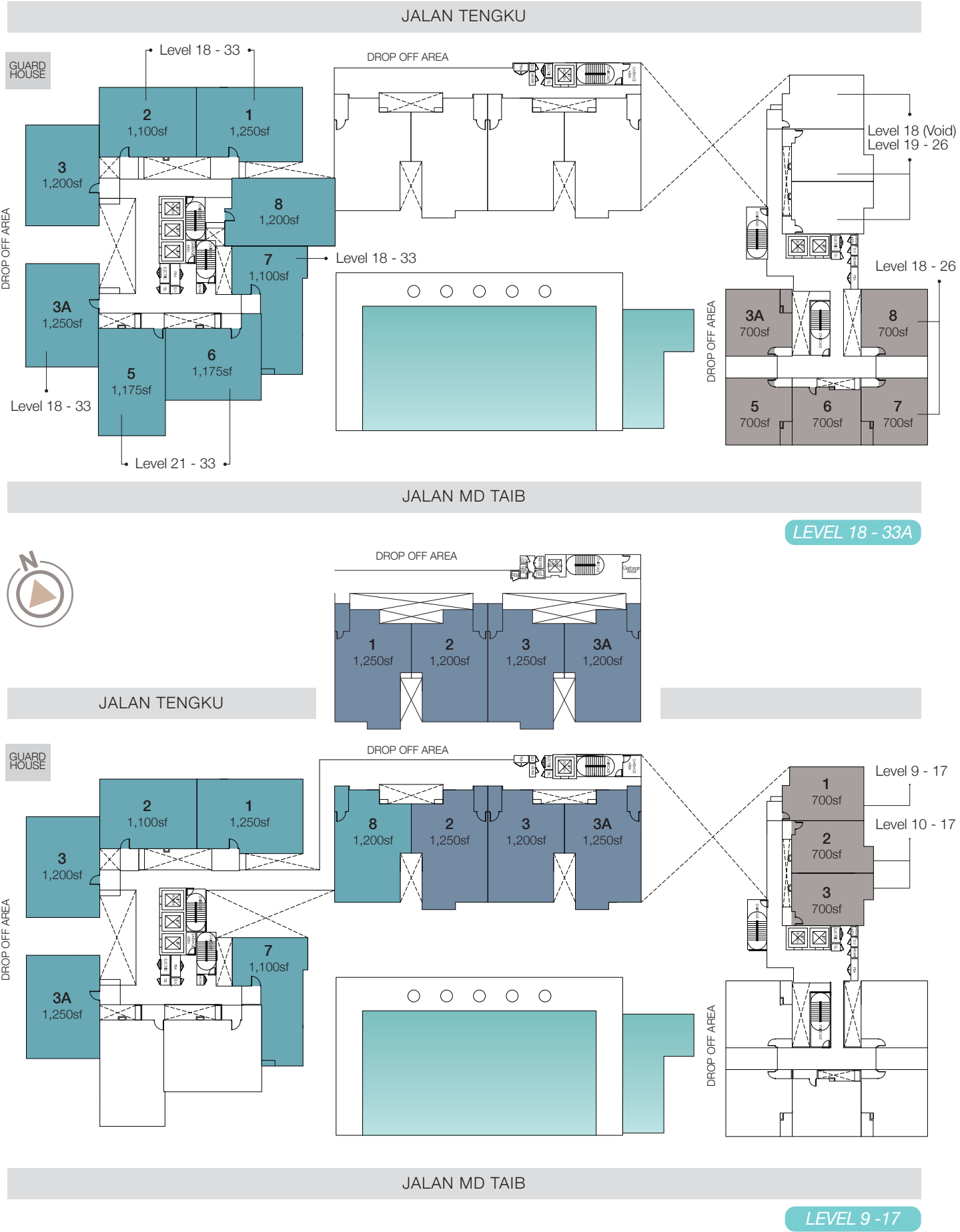
Car Park

Lobby & Car Park

Block B  
posh

Block D  
meto

Block C  
urban

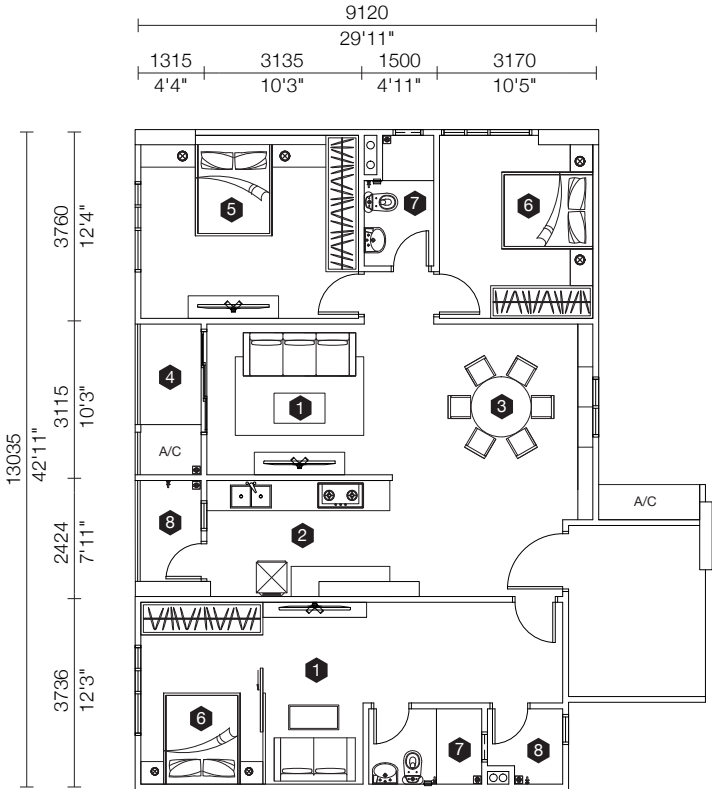




UNIT 1 (TYPE E)

116.12 sq.m  
1,250 sq.ft  
A. Parcel - 101 sq.ft

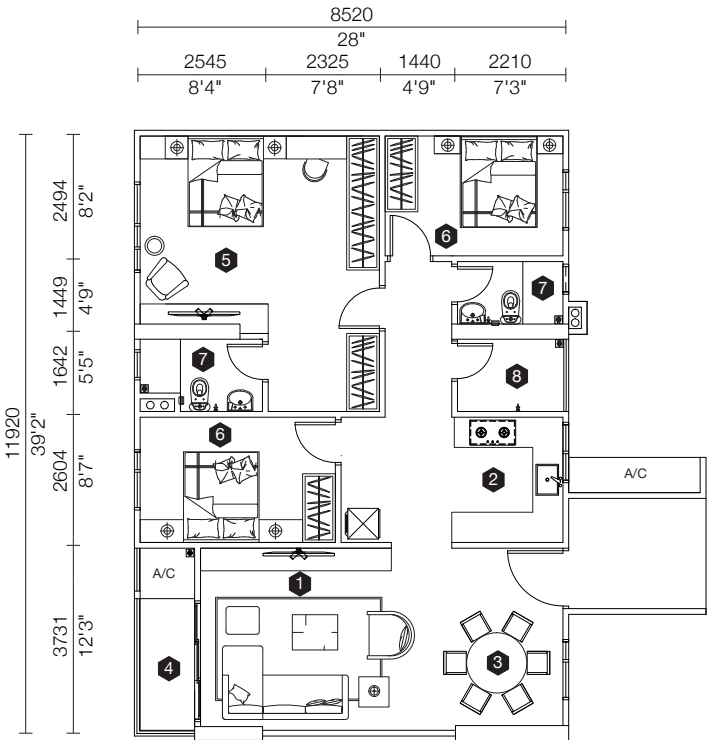
- 1 Living
- 2 Kitchen
- 3 Dining
- 4 Balcony
- 5 Master Bedroom
- 6 Bedroom
- 7 Bath
- 8 Laundry



UNIT 2 (TYPE A)

102.20 sq.m  
1,100 sq.ft  
A. Parcel - 68 sq.ft

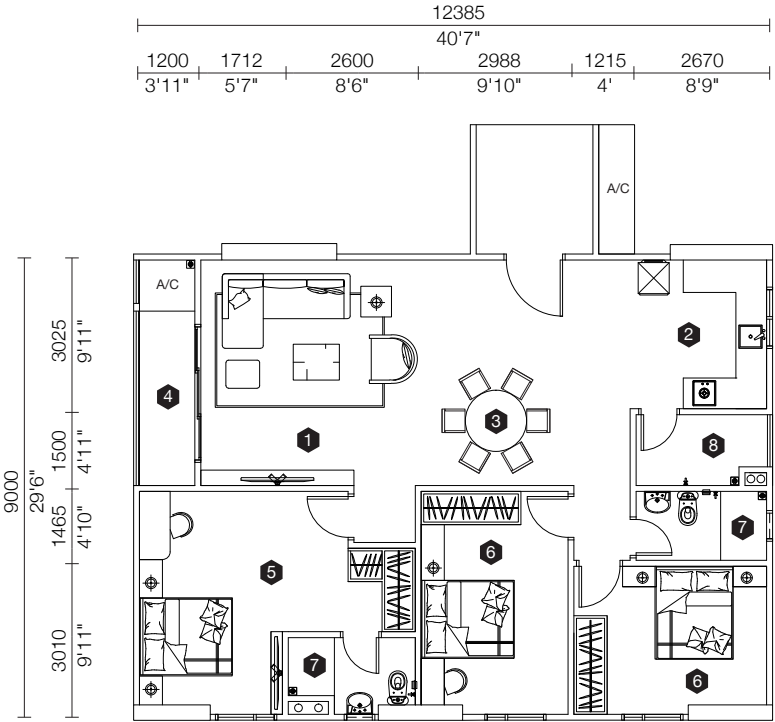
- 1 Living
- 2 Kitchen
- 3 Dining
- 4 Balcony
- 5 Master Bedroom
- 6 Bedroom
- 7 Bath
- 8 Laundry



UNIT 3 (TYPE D)

111.50 sq.m  
1,200 sq.ft  
A. Parcel - 66 sq.ft

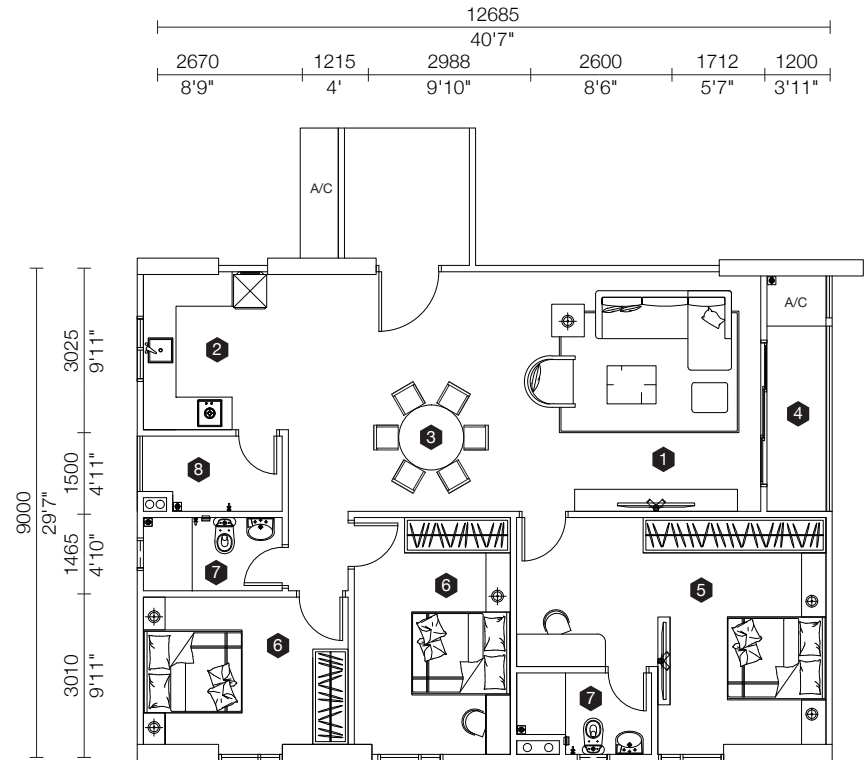
- 1 Living
- 2 Kitchen
- 3 Dining
- 4 Balcony
- 5 Master Bedroom
- 6 Bedroom
- 7 Bath
- 8 Laundry



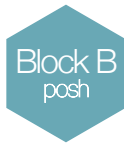
UNIT 4 (TYPE E1)

116.12 sq.m  
1,250 sq.ft  
A. Parcel - 65 sq.ft

- 1 Living
- 2 Kitchen
- 3 Dining
- 4 Balcony
- 5 Master Bedroom
- 6 Bedroom
- 7 Bath
- 8 Laundry



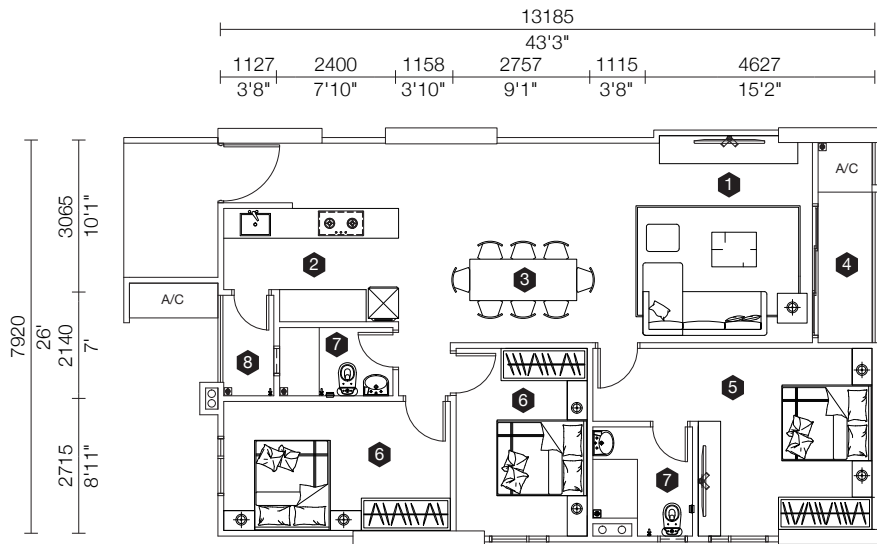




UNIT 5 (TYPE C4)

109.16 sq.m  
1,175 sq.ft  
A. Parcel - 59 sq.ft

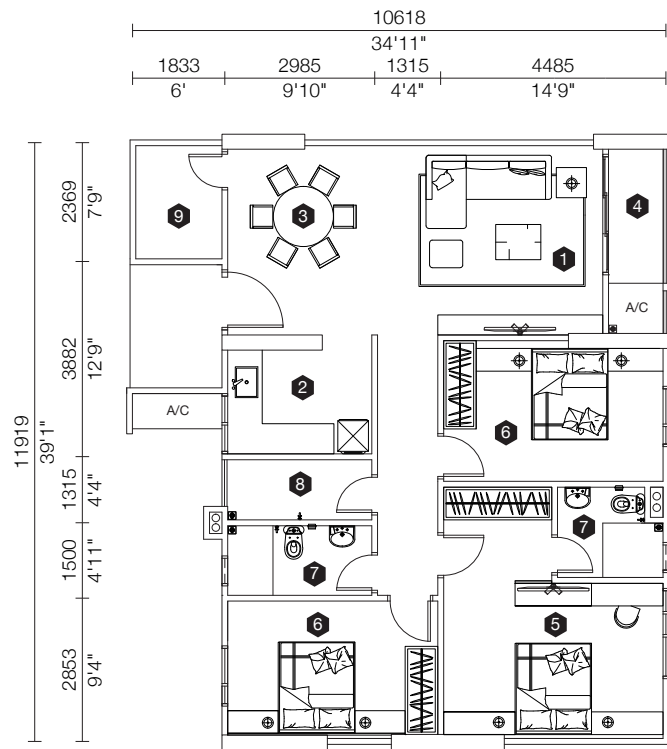
- 1 Living
- 2 Kitchen
- 3 Dining
- 4 Balcony
- 5 Master Bedroom
- 6 Bedroom
- 7 Bath
- 8 Laundry



UNIT 6 (TYPE C5)

109.16 sq.m  
1,175 sq.ft  
A. Parcel - 51 sq.ft

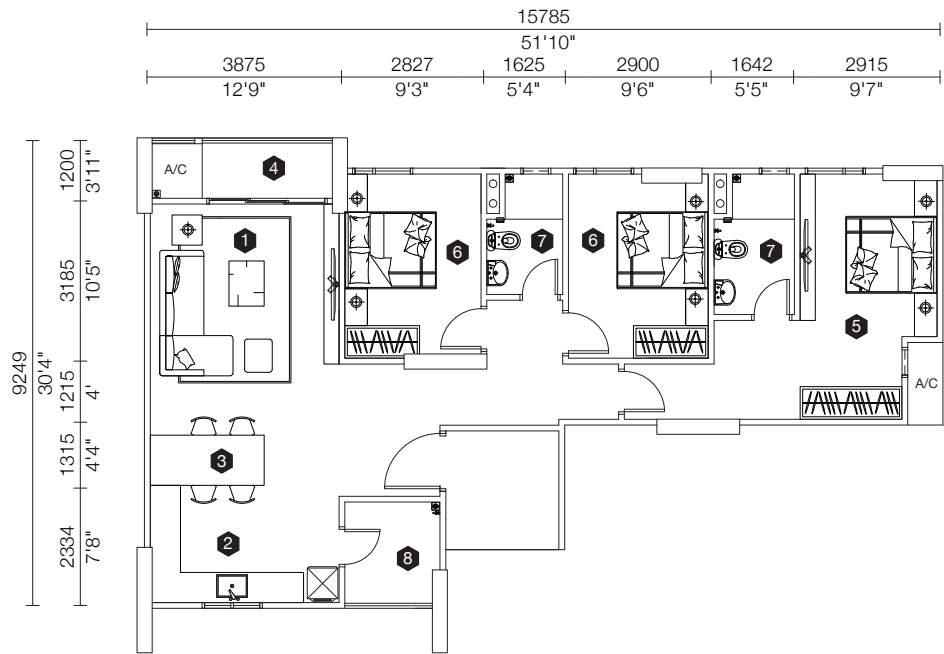
- 1 Living
- 2 Kitchen
- 3 Dining
- 4 Balcony
- 5 Master Bedroom
- 6 Bedroom
- 7 Bath
- 8 Laundry
- 9 Utility



UNIT 7 (TYPE A1)

102.20 sq.m  
1,100 sq.ft  
A. Parcel - 61 sq.ft

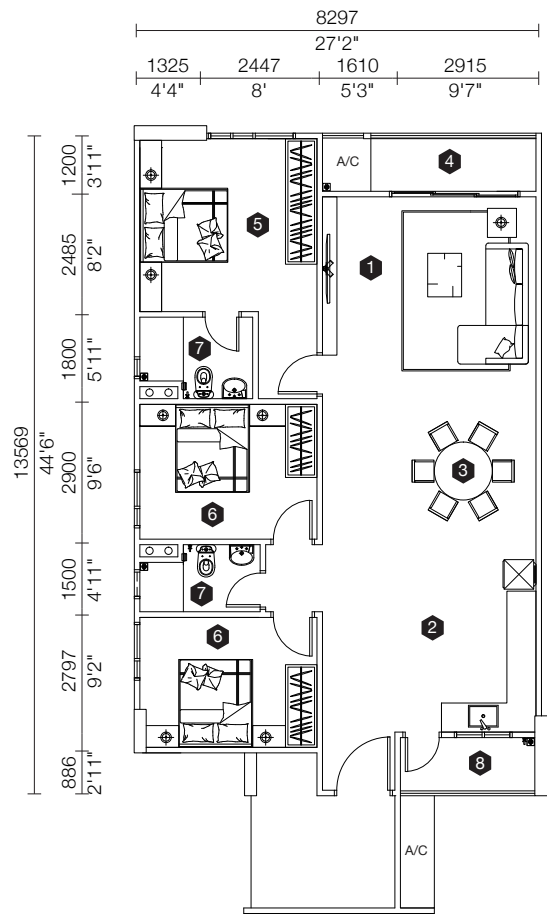
- 1 Living
- 2 Kitchen
- 3 Dining
- 4 Balcony
- 5 Master Bedroom
- 6 Bedroom
- 7 Bath
- 8 Laundry



UNIT 8 (TYPE D2)

111.50 sq.m  
1,200 sq.ft  
A. Parcel - 92 sq.ft

- 1 Living
- 2 Kitchen
- 3 Dining
- 4 Balcony
- 5 Master Bedroom
- 6 Bedroom
- 7 Bath
- 8 Laundry



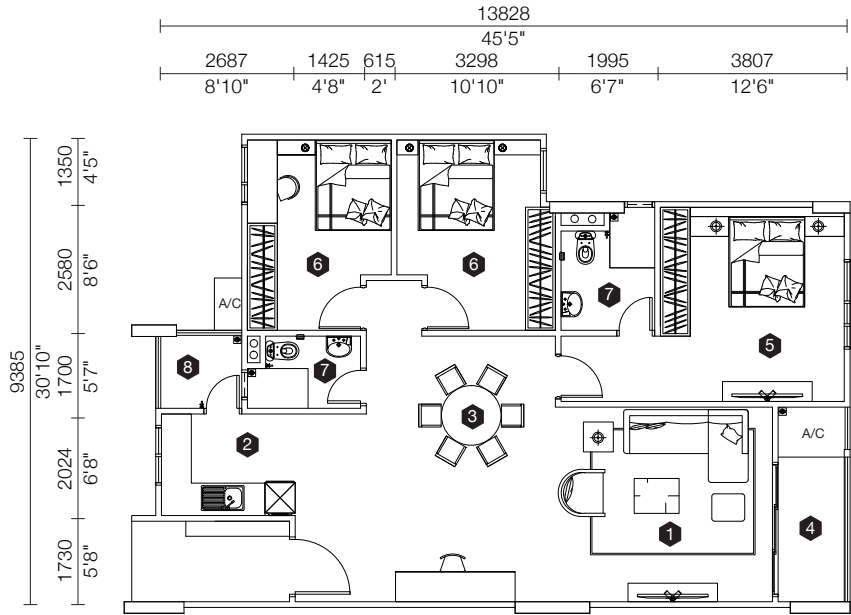




UNIT D1 (TYPE C3)

111.50 sq.m  
1,200 sq.ft  
A. Parcel - 59 sq.ft

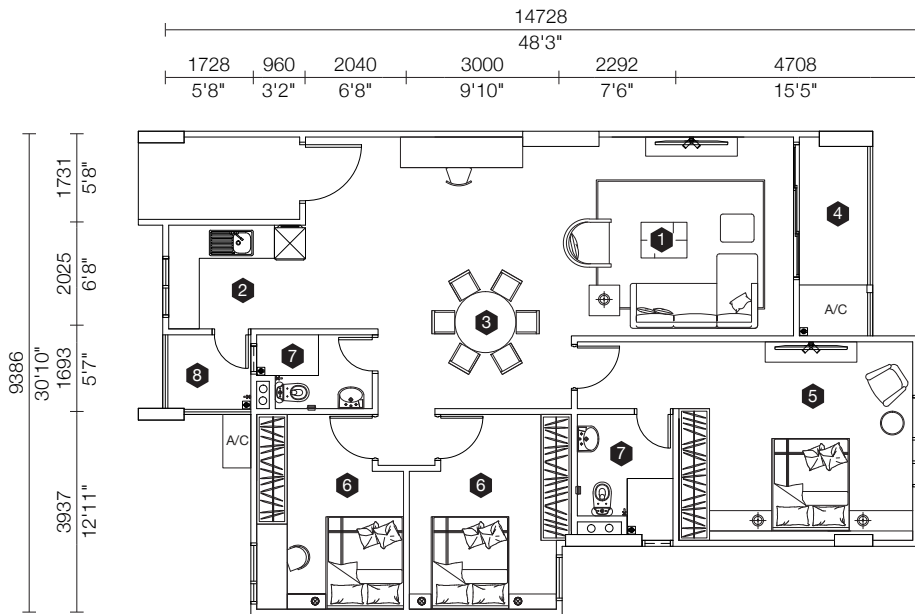
- 1 Living
- 2 Kitchen
- 3 Dining
- 4 Balcony
- 5 Master Bedroom
- 6 Bedroom
- 7 Bath
- 8 Laundry



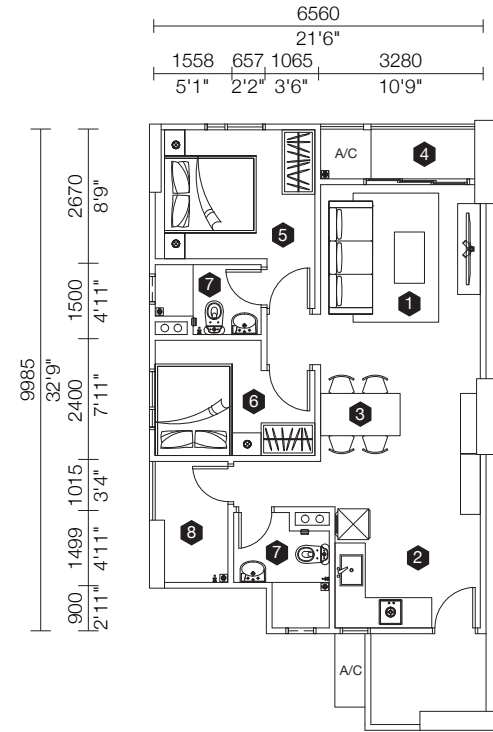
UNIT D2 (TYPE C3A)

116.00 sq.m  
1,250 sq.ft  
A. Parcel - 60 sq.ft

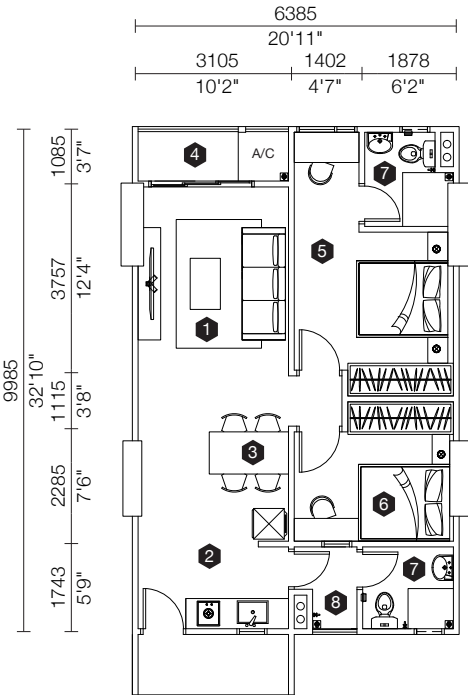
- 1 Living
- 2 Kitchen
- 3 Dining
- 4 Balcony
- 5 Master Bedroom
- 6 Bedroom
- 7 Bath
- 8 Laundry



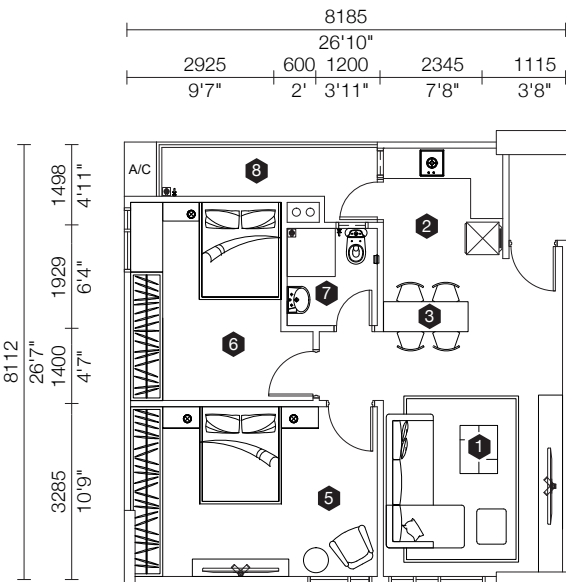
- 1 Living
- 2 Kitchen
- 3 Dining
- 4 Balcony
- 5 Master Bedroom
- 6 Bedroom
- 7 Bath
- 8 Laundry



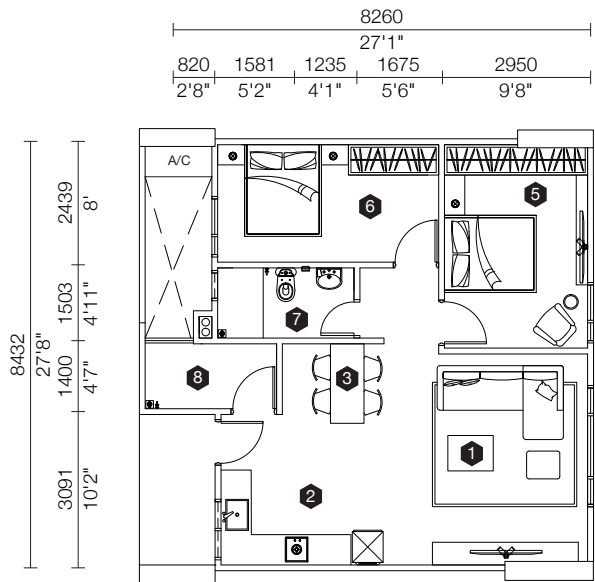
UNIT 1 (TYPE S1)  
65 sq.m / 700 sq.ft | A. Parcel - 44 sq.ft



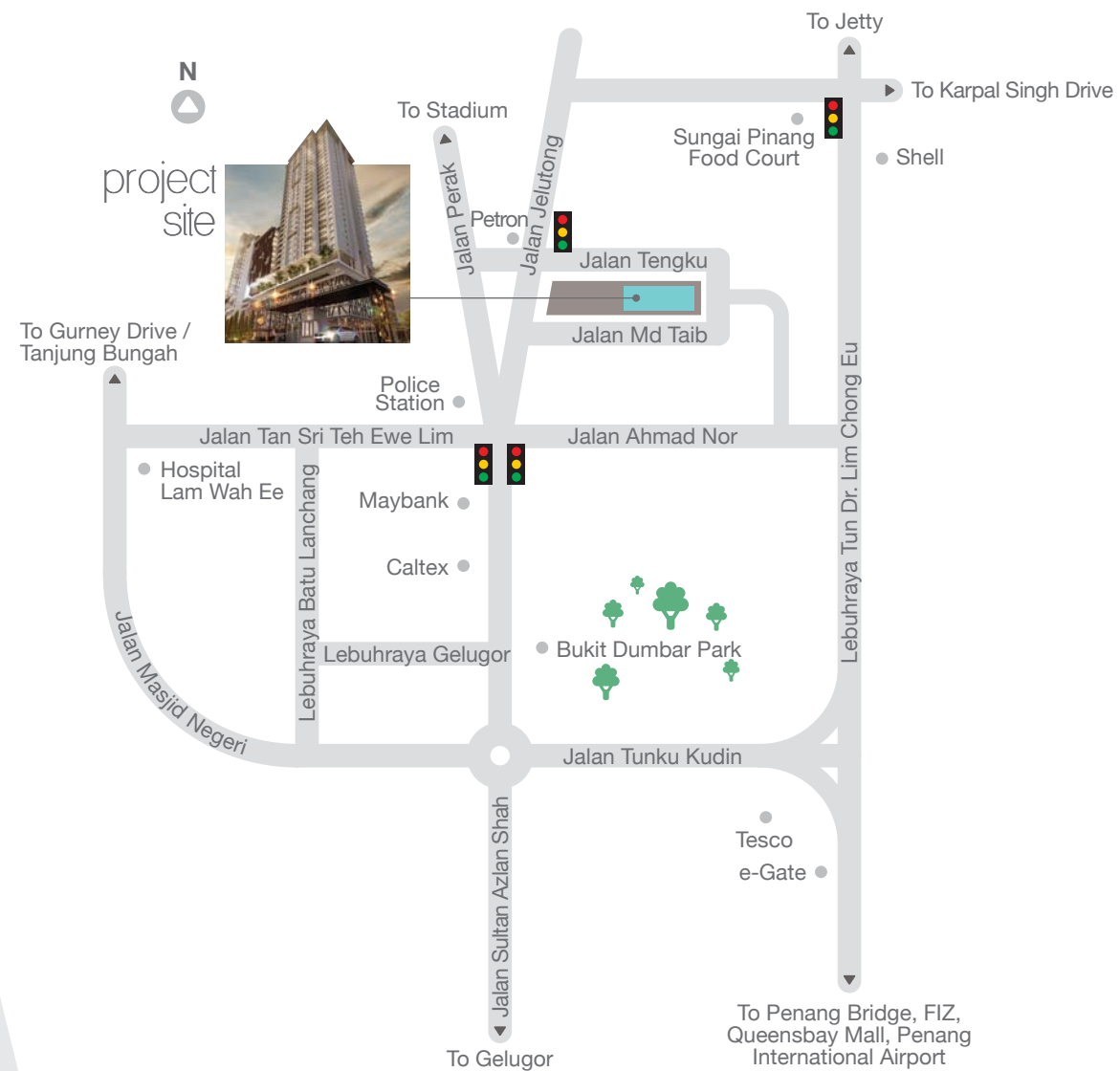
UNIT 2, 3 (TYPE S)  
65 sq.m / 700 sq.ft | A. Parcel - 43 sq.ft



UNIT 4, 5, 7, 8 (TYPE S2)  
65 sq.m / 700 sq.ft | A. Parcel - 20 sq.ft



UNIT 6 (TYPE S3)  
65 sq.m / 700 sq.ft | A. Parcel - 52 sq.ft



## feel the heartbeat of Jelutong

Located right in the heart of Jelutong, one of the most desired locations in Penang, Artis3 puts you within easy reach of everything you need including public amenities, shopping and entertainment attractions as well as top employment areas such as Georgetown and Bayan Lepas FIZ.

**AIRMAS GROUP** 水金集团



No. 33, Jalan Jelawat, Seberang Jaya, 13700 Perai, Penang, Malaysia F. +604 380 6001 E. sales@airmas.com

Please note: This marketing material is for information purposes only. Plans, measurements and color representations in this marketing material are intended as an indicative guide only and are subject to change at any time. All drawings are artist's impression only. While every effort is made to provide accurate and complete information, Dutamas Permai Sdn. Bhd. (Marketing under Airmas Group of Companies) and companies related to Dutamas Permai Sdn. Bhd. make no warranty as to the accuracy of any information provided in this marketing material and do not and will not accept liability for any error or discrepancy in that information. Please note dimensions and areas are subject to the registration of the plan of subdivision. This marketing material will not form part of any contract for sale for this or any other property referred to herein. All illustration are artist's impression only.

Developer: Dutamas Permai Sdn. Bhd. [848533-K] • Developer Licence No.: 14300-1/04-2018/0231 (L) • Validity Period: 7/4/2016 to 6/4/2018 • Advertising & Sales Permit: 14300-1/04-2018/0231 (P) • Validity Period: 7/4/2016 to 6/4/2018 • Approving Authority: Majlis Perbandaran Pulau Pinang • Land Encumbrances: OCBC Bank • Building Approval No.: MPFP/OSC/PB(7358)/14 • Planning Approval no.: MPFP/OSC/PM(1296)/11 • Total Units: 373 units, Min Price RM200,000.00 Max Price RM1,240,000.00 • Expected Date of Completion: Dec 2019 • Tenure of Land: Freehold • 5% Discount for Bumiputera • Subject to terms and conditions



1800 188 333  
011 1722 5711

[www.airmas.com](http://www.airmas.com)